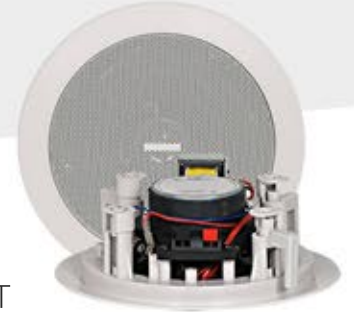


TECHNICAL SPECIFICATIONS



CL-1T

Design

5.25" Full Range
Ceiling Speaker

Impedance

8 Ohm / 100V / 70V

Power Handling (RMS)

15 Watts (continuous)

Programme Watts

30 Watts

Sensitivity 1W/1M

88 dB

Max. SPL

99.5 dB (cont. max SPL / 1m)
105.5 dB peak

Frequency Response

80 Hz-20 kHz

Dispersion

140° Conical

Tappings 100V

6W,
3W,
1.5W,
0.8W

Tappings 70V

3W,
1.5W,
0.75W,
0.4W

Tappings IMP

1.7K,
3.3K,
6.7K,
13K

Connectors

Spring Loaded Terminals